

ACCESSORIES FOR CABINETS AND OPEN RACKS

SHELVES



Fixed shelf II/2U

**Shelves fixed on two mounting profiles - 19" assembly**

Available in fixed and pull-out version.

**Material**

Sheet steel powder painted in light grey (RAL 7035) or black (RAL 9005).

**Scope of delivery**

Fixed or pull out shelf with fixing accessories.



Pull out shelf II/2U

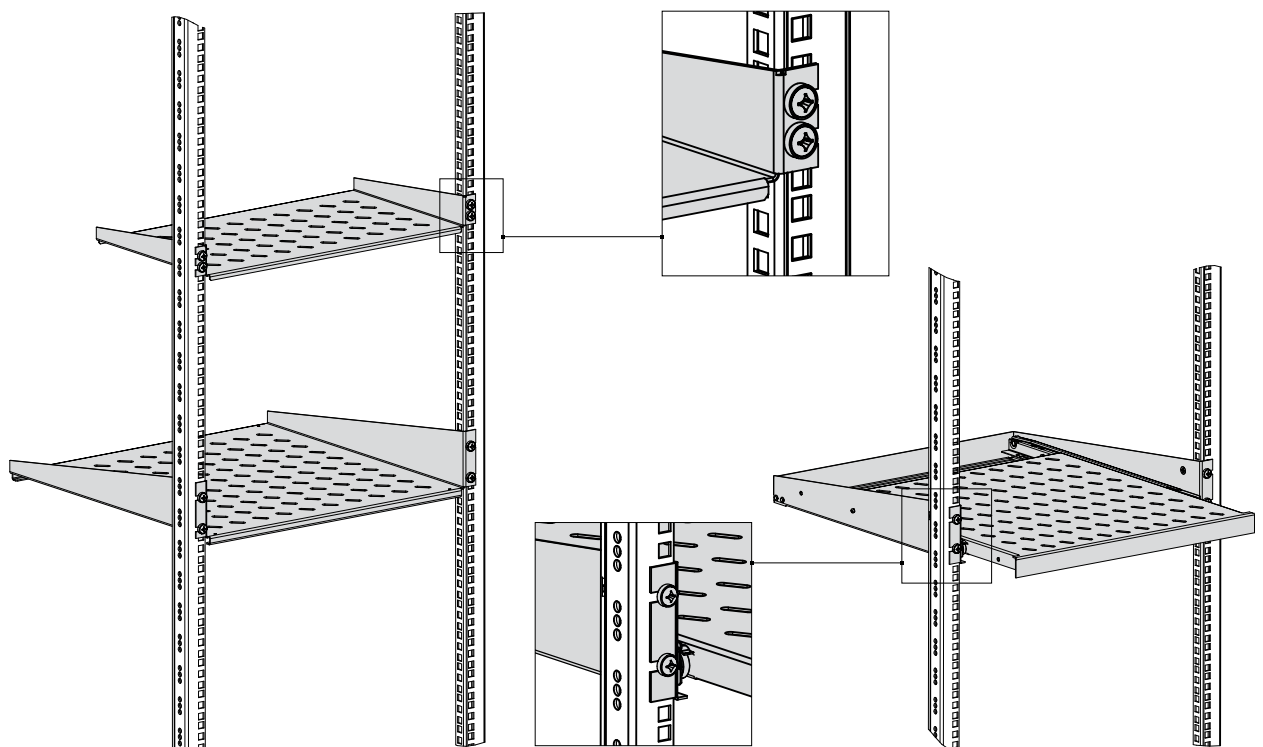


Fixed shelf II/1U

Product name	Usable dimensions			Load capacity* [kg]	Catalogue number	
	Height [U = 44.45 mm]	Width [mm]	Depth [mm]		RAL 7035	RAL 9005
Fixed shelf II/2U	2 U	446	250	25	WZ-SB00-49-05-011	WZ-SB00-49-05-161
			350	25	WZ-SB00-49-04-011	WZ-SB00-49-04-161
			450	25	WZ-SB00-49-03-011	WZ-SB00-49-03-161
			650	25	WZ-SB00-49-01-011	WZ-SB00-49-01-161
Pull out shelf II/2U	2 U	416	355	20	WZ-5841-14-04-011	WZ-5841-14-04-161
			455	20	WZ-5841-14-02-011	WZ-5841-14-02-161
			555	20	WZ-5841-14-01-011	WZ-5841-14-01-161
Fixed shelf II/1U	1 U	446	250	6	WZ-5714-53-00-011	WZ-5714-53-00-161
			350	10	WZ-5714-52-00-011	WZ-5714-52-00-161

Package: 1 pc.

\* static load, evenly distributed over the entire surface



## ACCESSORIES FOR CABINETS AND OPEN RACKS

SHELVES

### Shelves fixed on four mounting profiles - 19" assembly, adjustable length of the rear mounting brackets

Available in fixed and pull-out version.  
Fixed on two pairs of 19" mounting profiles.

#### Material

Sheet steel powder painted in light grey (RAL 7035) or black (RAL 9005), anti-dust brushes and cable clamps made of plastic.

#### Scope of delivery

Fixed or pull out shelf with fixing accessories.



Fixed shelf IS/0.5U



Fixed shelf ISU/1U with cable clamps and brush cable entries



Pull-out shelf IR/1U

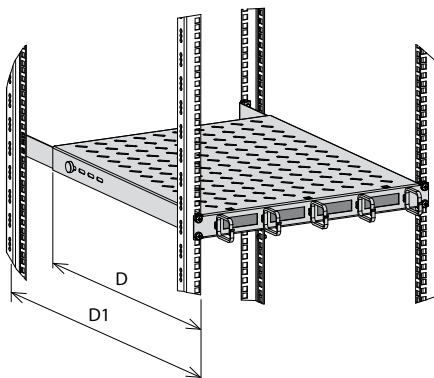
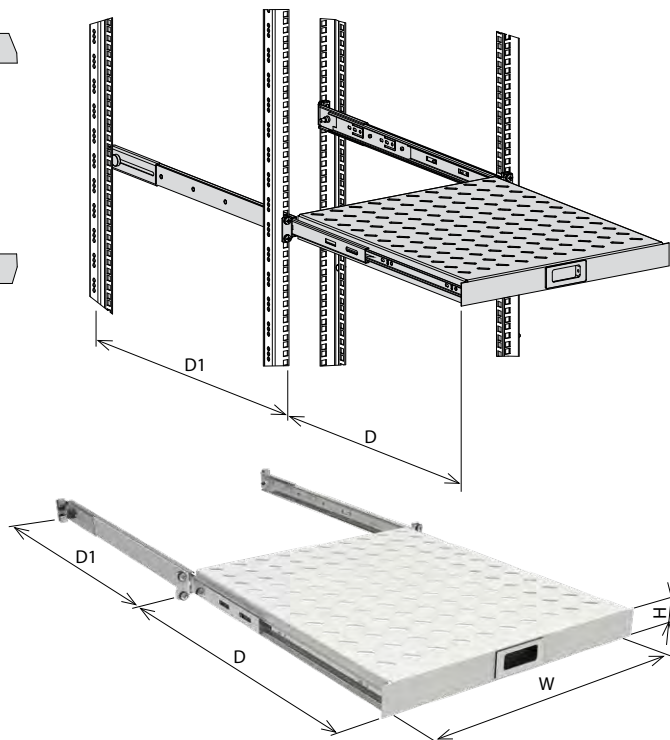
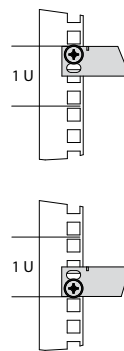
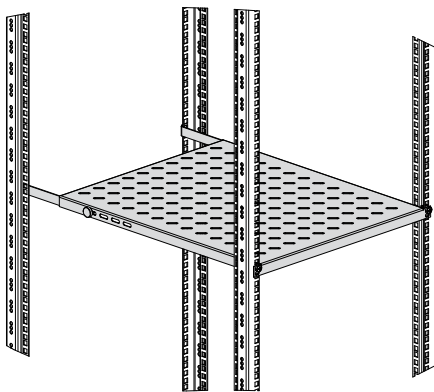
Product name	Dimensions [mm]				Fo cabinet depth** [mm]	Load capacity*** [kg]	Catalogue number	
	H	W	D	D1			RAL 7035	RAL 9005
Fixed shelf IS/0.5U	22 (0.5 U)	450	350*	350-450	600	70	WZ-8264-80-02-350-011	WZ-8264-80-02-350-161
			450	450-550			WZ-8264-80-03-450-011	WZ-8264-80-03-450-161
			550*	550-650	800		WZ-8264-80-04-550-011	WZ-8264-80-04-550-161
			650	650-750			WZ-8264-80-05-650-011	WZ-8264-80-05-650-161
Fixed shelf ISU/1U with cable clamps and brush cable entries	44 (1 U)	450	350*	350-450	600	120	WZ-5841-20-02-350-011	WZ-5841-20-02-350-161
			450	450-550			WZ-5841-20-03-450-011	WZ-5841-20-03-450-161
			550*	550-650	800		WZ-5841-20-04-550-011	WZ-5841-20-04-550-161
			650	650-750			WZ-5841-20-05-650-011	WZ-5841-20-05-650-161
			750*	750-850			WZ-5841-20-06-750-011	WZ-5841-20-06-750-161
850	850-950	1000	WZ-5841-20-07-850-011	WZ-5841-20-07-850-161				
Pull-out shelf IR/1U	44 (1 U)	414	305*	350-450	600	30	WZ-5841-25-01-350-011	WZ-5841-25-01-350-161
			405	450-550			WZ-5841-25-02-450-011	WZ-5841-25-02-450-161
			505*	550-650	800		WZ-5841-25-03-550-011	WZ-5841-25-03-550-161
			605	650-750			WZ-5841-25-04-650-011	WZ-5841-25-04-650-161

Package: 1 pc.

\* dedicated for ZPAS cabinets with original position of mounting profiles

\*\* minimum depth of the cabinet to which the shelf can be mounted

\*\*\* static load, evenly distributed over the entire surface



ACCESSORIES FOR CABINETS AND OPEN RACKS

SHELVES



**Shelf with adjustable depth  
1 U, 500-900 mm**

**Shelves fixed on four mounting profiles  
- 19" assembly, adjustable depth**

Fixed on two pairs of 19" mounting profiles or mounting angles.

**Material**

Sheet steel powder painted in light grey (RAL 7035) or black (RAL 9005).

**Scope of delivery**

Shelf with fixing accessories.

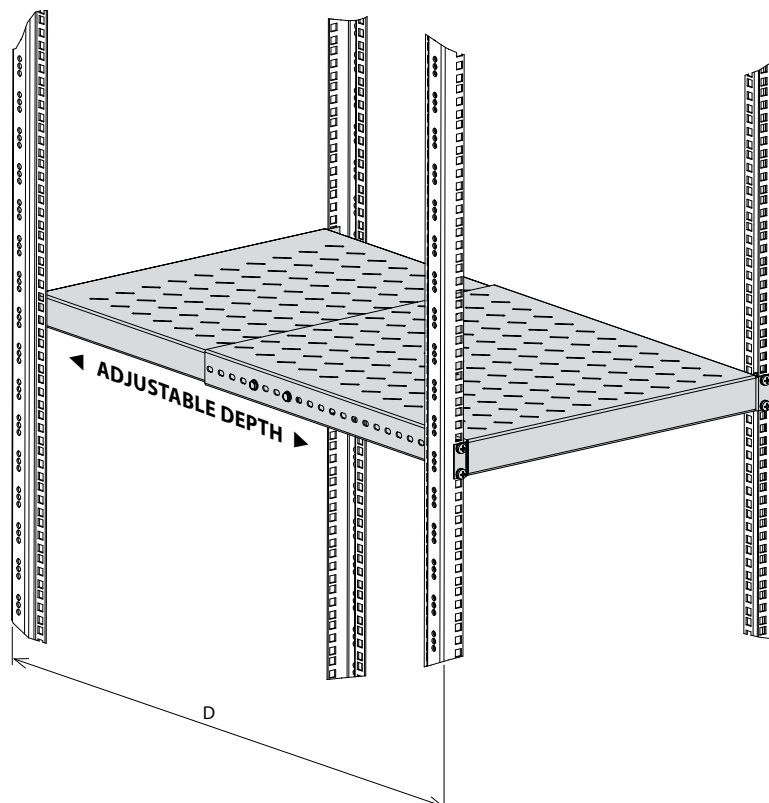


**Shelf with adjustable depth  
1 U, 350-600 mm**

Product name	Usable dimensions			Load capacity* [kg]	Catalogue number	
	Height [U = 44.45 mm]	Width [mm]	Depth [mm]		RAL 7035	RAL 9005
Shelf with adjustable depth	1 U (44 mm)	440	350-600	150	WZ-3074-83-04-011	WZ-3074-83-04-161
	1 U (44 mm)	440	500-900	150	WZ-3074-83-00-011	WZ-3074-83-00-161

Package: 1 pc.

\* static load, evenly distributed over the entire surface



## ACCESSORIES FOR CABINETS AND OPEN RACKS

SHELVES

### Shelves fixed on six 19" mounting profiles - fixing to the side openings

For cabinets 1000 and 1200 mm deep (SZB IT, DSR IT, Z-SERVER).  
Available in fixed and telescopic versions.  
Assembling on three pairs of 19" mounting profiles (fastening to side openings).

#### Material

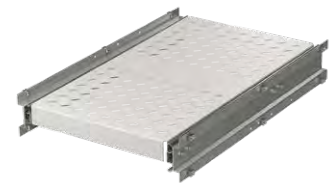
Sheet steel powder painted in light grey (RAL 7035) or black (RAL 9005).

#### Scope of delivery

Fixed or telescopic shelf with fixing accessories.



High-load fixed shelf



High-load telescopic shelf

Product name	Usable dimensions			Load capacity* [kg]	Catalogue number	
	Height [mm]	Width [mm]	Depth [mm]		RAL 7035	RAL 9005
High-load fixed shelf	38	483	700	200	WZ-5841-06-00-011	WZ-5841-06-00-161
High-load telescopic shelf	50 (shelf) 110 (fixing rails)	392	700	140	WZ-5841-08-00-011	WZ-5841-08-00-161

Package: 1 pc.

\* static load, evenly distributed over the entire surface

