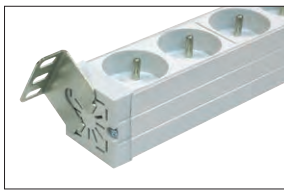


POWER SUPPLY SYSTEMS



LZI-30/9



**19" power strip,  
possible to be mounted  
at 12 different angles**

**Single-phase power strips 16 A**

**Characteristics**

Anodized aluminium body, in natural colour.  
Plastic elements: light-grey similar to RAL 7035.  
Dimensions: height/width 44 mm, depth 44 mm (protruding elements increase the depth to 70 mm), length according to the table. Removable metal mounting brackets for installing the strip in four directions.  
LZI-30/9 strip can be mounted at various angles, 12 positions of set up regulated by 30° turns.

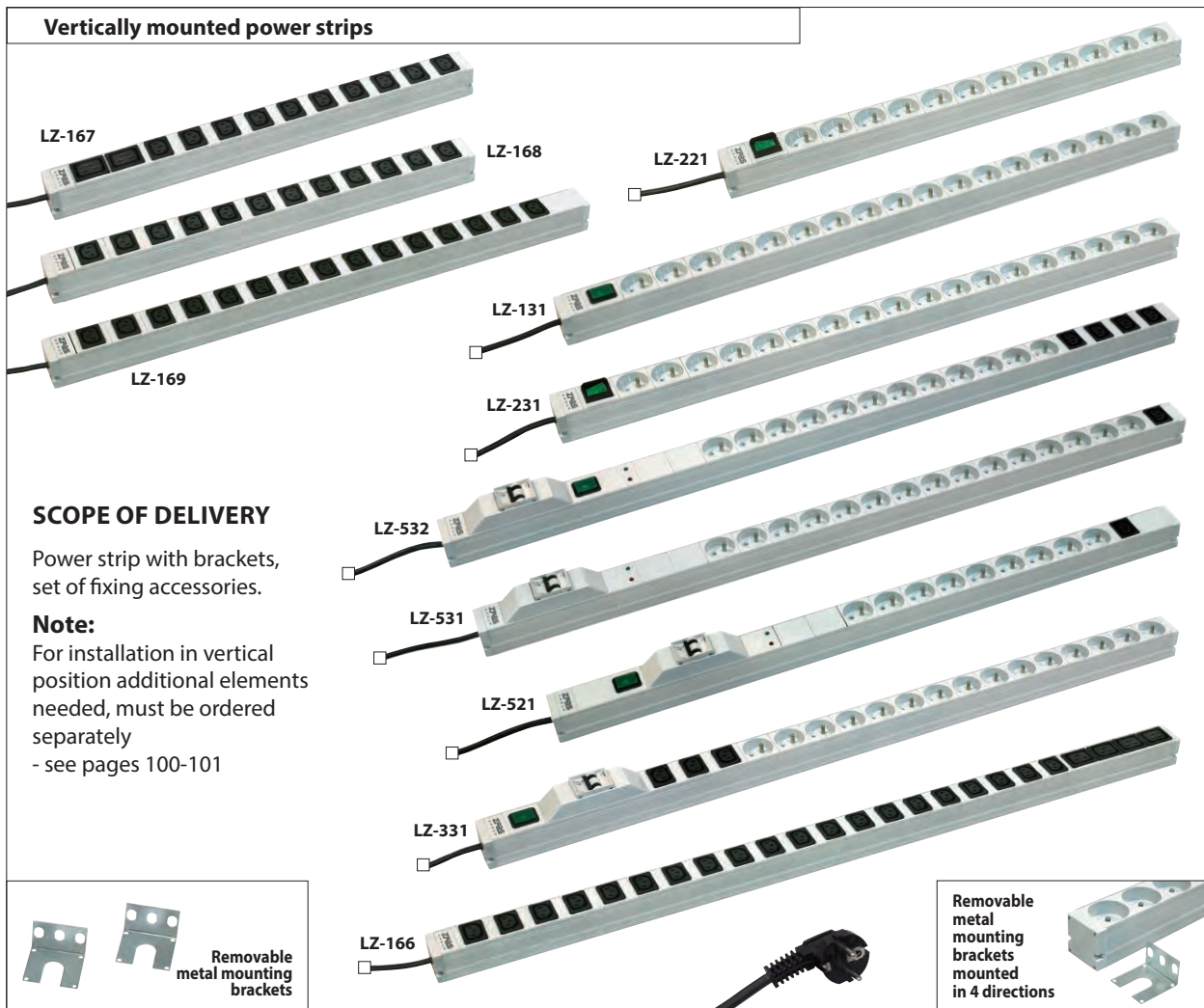
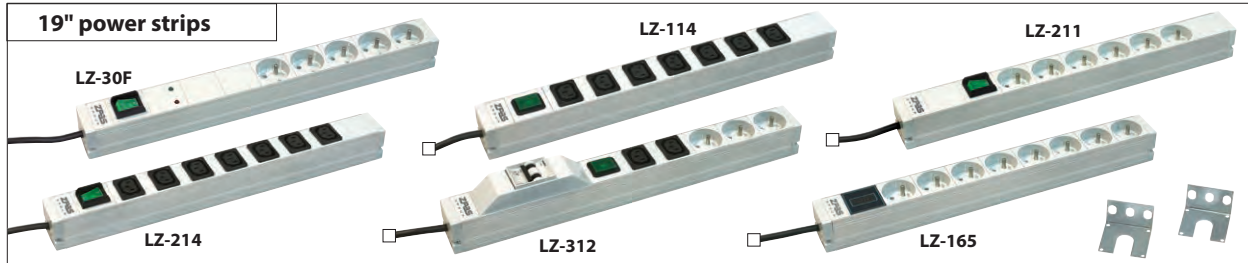
**TECHNICAL DATA**

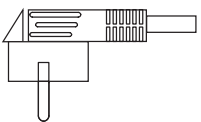
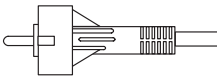
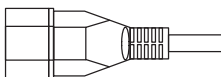
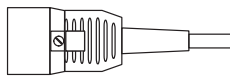

Nominal voltage.....230 V AC  
Maximum load .....16 A / 3680 W  
Protection degree .....IP 20  
Supply cable .....3 m, black, conductor section 1.5 mm<sup>2</sup>  
(other lengths within of 2-5 m scope, available on request)

Installation	Power strip type	Length without mounting brackets [mm]	Features									Catalogue number	
			Check lamp	Illuminated switch	Surge arrester	RFI noise filter	Circuit breaker MCB-16	Ammeter	Number of UTE sockets	Number of IEC C13 sockets	Number of IEC C19 sockets		
19" 1U	LZI-30/9	431								9			WZ-LZ130-09-00-000
	LZ-30F	431		x	x	x				5			WZ-LZ30-F0-00-000
	LZ-114	431	x								7		WZ-LZ11-40-00-000
	LZ-211	431		x							6		WZ-LZ21-10-00-000
	LZ-214	431		x							7		WZ-LZ21-40-00-000
	LZ-312	431	x					x			3	2	WZ-LZ31-20-00-000
vertical 0U	LZ-165	431							x	8			WZ-LZ16-50-00-000
	LZ-221	603		x						12			WZ-LZ22-10-00-000
	LZ-521	860	x		x	x	x			9	1		WZ-LZ52-10-00-000
	LZ-131	861	x							18			WZ-LZ13-10-00-000
	LZ-231	861		x						18			WZ-LZ23-10-00-000
	LZ-331	990	x				x			15	3		WZ-LZ33-10-00-000
	LZ-531	990			x	x	x			15	1		WZ-LZ53-10-00-000
	LZ-532	1033	x		x	x	x			12	4		WZ-LZ53-20-00-000
	LZ-166	1076									20	4	WZ-LZ16-60-00-000
	LZ-167	560									10	2	WZ-LZ16-70-00-000
	LZ-168	560									12		WZ-LZ16-80-00-000
LZ-169	732									15		WZ-LZ16-90-00-000	

Type of sockets						
Standard sockets			Sockets on request			
UTE (French type) 230 V, 16 A	IEC 60320 C13 230 V, 10 A	IEC 60320 C19 230 V, 16 A	Schuko 230 V, 16 A	IEC 60320 C13 230 V, 10 A with lock	IEC 60320 C13 230 V, 10 A with fuse	IEC 60320 C13, 230 V, 10 A with fuse and check lamp

## Power strips mounted in 4 directions



Type of plugs				
Standard plug	Plugs on request			
				
Angle Unischuko 230 V, 16 A	Straight Unischuko 230 V, 16 A	IEC 60320 C14 230 V, 10 A	IEC 60320 C20 230 V, 16 A	IEC 60309 230 V, 16 A