

ACCESSORIES FOR SZE3 CABINETS

DOORS



Doors

SZE3 cabinets have solid metal door as standard. If required, the door can be glazed and/or ventilated. The door can be mounted not only on the cabinet's front and back but also on its sides. Tightness is ensured by a seal cast of foamed polyurethane.

The door has M8 earthing bolts. A standard cabinet has a four-point lock with double-bit insert and no handle. The lock is located outside the sealed zone, so it does not compromise protection degree IP.

Maximum door opening angle: 150°

At the customer's request we can introduce various kinds of modifications, such as cutting out holes for touch panels, adding external hinges to increase the door opening angle, etc.

Material:

- sheet steel powder paint, light grey (RAL 7035),
- galvanized steel stiffening profiles, perforated for installing cable trays, for example,
- brown smoked safety glass,
- door ventilated through plastic ventilation grilles protection degree IP 54.

Scope of delivery

Complete wing of door with hinges and lock that includes doublebit insert (no handle).

SINGLE-LEAF DOOR

For cabinet		Door dimensions		Catalogue number					
height [mm]	width [mm]	H [mm]	W [mm]	Solid door IP 55	Door with glass IP 55	Door with passive ventilation IP 54		Door with glass and passive ventilation IP 54	
				right/left	right/left	right	left	right	left
2000	600	1990	595	WZ-6282-30-04-011	WZ-6282-68-04-011	WZ-6282-74-04-011	WZ-6282-74-10-011	WZ-6282-76-04-011	WZ-6282-76-10-011
	800	1990	795	WZ-6282-30-03-011	WZ-6282-68-03-011	WZ-6282-74-03-011	WZ-6282-74-09-011	WZ-6282-76-03-011	WZ-6282-76-09-011
2200	600	2190	595	WZ-6282-30-02-011	WZ-6282-68-02-011	WZ-6282-74-02-011	WZ-6282-74-08-011	WZ-6282-76-02-011	WZ-6282-76-08-011
	800	2190	795	WZ-6282-30-01-011	WZ-6282-68-01-011	WZ-6282-74-01-011	WZ-6282-74-07-011	WZ-6282-76-01-011	WZ-6282-76-07-011

Package: 1 pc.



ACCESSORIES FOR SIZE3 CABINETS

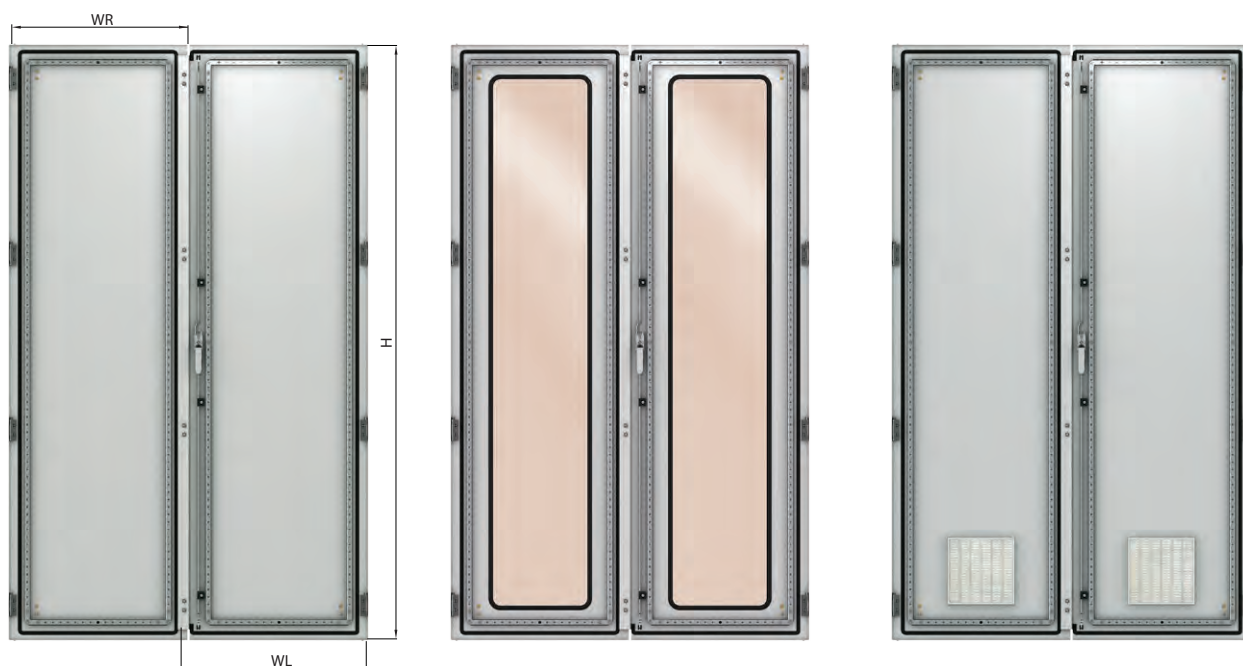
DOORS

DOUBLE-LEAF DOOR

For cabinet		Door dimensions			Catalogue number					
height [mm]	width [mm]	H [mm]	WR [mm]	WL [mm]	Solid door IP 55		Door with glass IP 55		Door with passive ventilation IP 54	
					right* wing	left* wing	right* wing	left* wing	right* wing	left* wing
2000	1000	1990	495	538	WZ-6282-45-04-011	WZ-6282-47-04-011	WZ-6282-81-04-011	WZ-6282-83-04-011	WZ-6282-85-04-011	WZ-6282-87-04-011
	1200	1990	595	638	WZ-6282-45-03-011	WZ-6282-47-03-011	WZ-6282-81-03-011	WZ-6282-83-03-011	WZ-6282-85-03-011	WZ-6282-87-03-011
2200	1000	2190	495	538	WZ-6282-45-02-011	WZ-6282-47-02-011	WZ-6282-81-02-011	WZ-6282-83-02-011	WZ-6282-85-02-011	WZ-6282-87-02-011
	1200	2190	595	638	WZ-6282-45-01-011	WZ-6282-47-01-011	WZ-6282-81-01-011	WZ-6282-83-01-011	WZ-6282-85-01-011	WZ-6282-87-01-011

Package: 1 pc. (wing)

*) when facing the structure



Door stop

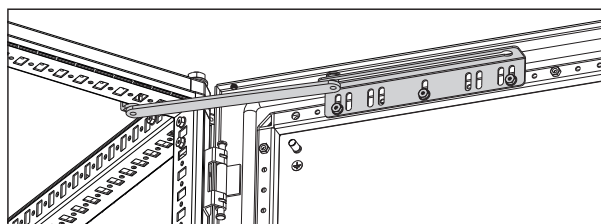
Protects hinges from damage. Mounted in the upper part of the cabinet to the stiffening frame of the door and the cabinet's frame.

Material

Galvanised sheet steel

Scope of delivery

Door stop with fixing accessories for mounting into the cabinet.



Package	Catalogue number
1 pc.	WZ-6935-17-00-000

ACCESSORIES FOR SIZE3 CABINETS

DOORS • DOCUMENT POCKET • ROOF

**Swing handle for the door's lock**

For use in the cabinet door instead of the factory-mounted lock without a handle.

Material

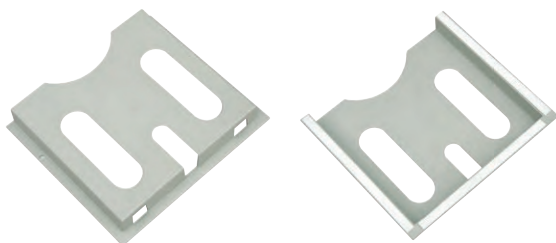
Plastic body, metal handle.

Scope of delivery

Body with handle, internal mechanism, double-bit or cylinder insert and key(s).

The scope of delivery does not include elements of the latching system on the inside of the door.

Product name	Package	Catalogue number
Swing handle with double-bit insert + 1 key	1 set	M1H-00-0532
Swing handle with double-bit insert + 2 keys	1 set	M1H-00-0531

**Document pocket**

For fixing on the cabinet's door.
A4 size, light grey (RAL 7035) colour.

Material

Plastic

Scope of delivery

Pocket with self-adhesive fixing tape.

Package	Colour	Catalogue number
1 pc.	RAL 7035	WZ-SB00-40-00-011

**Roof**

Roof's height with fixing/spacer bolts: 41 mm

Material

Sheet steel powder painted in RAL 7035.

Scope of delivery

Roof with 4 fixing/spacer bolts for mounting.
(Assembly screws M12 are delivered with the cabinet.)

For cabinet		Catalogue number
width [mm]	depth [mm]	
600	400	WZ-6935-56-16-011
	500	WZ-6935-56-15-011
	600	WZ-6935-56-14-011
	800	WZ-6935-56-13-011
800	400	WZ-6935-56-12-011
	500	WZ-6935-56-11-011
	600	WZ-6935-56-10-011
	800	WZ-6935-56-09-011
1000	400	WZ-6935-56-08-011
	500	WZ-6935-56-07-011
	600	WZ-6935-56-06-011
	800	WZ-6935-56-05-011
1200	400	WZ-6935-56-04-011
	500	WZ-6935-56-03-011
	600	WZ-6935-56-02-011
	800	WZ-6935-56-01-011

Package: 1 pc.

ACCESSORIES FOR SIZE3 CABINETS

SIDE PANELS • PARTITION

Side panels

Panels are bolted to the frame with intermediate elements that position the panel in the frame. After installation, they extend the cabinet width by 5 mm on each side.

All panels are fitted with seals cast of polyurethane foam, and M8 stud bolts for mounting earthing wires.

If requested, the side panels can have holes for air vents, fans, heat exchangers and air conditioners.

Material

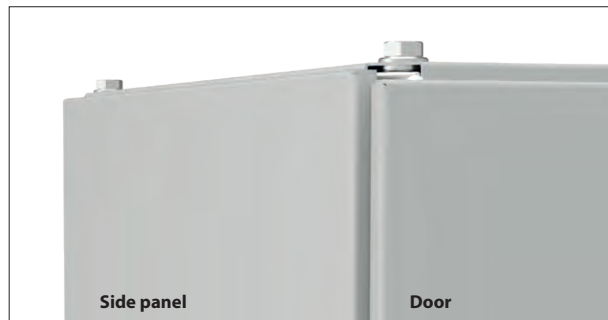
Sheet steel powder painted in light grey (RAL 7035).

Scope of delivery

Set of 2 side panels with fixing accessories for mounting into the cabinet.

For cabinet		Catalogue number
height [mm]	depth [mm]	
2000	400	WZ-6282-18-08-011
	500	WZ-6282-18-07-011
	600	WZ-6282-18-06-011
	800	WZ-6282-18-05-011
2200	400	WZ-6282-18-04-011
	500	WZ-6282-18-03-011
	600	WZ-6282-18-02-011
	800	WZ-6282-18-01-011

Package: 2 pc.



Partition

The partition is used as a separating panel between bayed cabinets. It does not increase the cabinet width after installation, it is flushed into the cabinet frame.

If requested, any holes can be made in the partition, for example for cable entries.

Material

Al-Zn coated sheet steel.

Scope of delivery

Partition with fixing accessories.

For cabinet		Catalogue number
height [mm]	depth [mm]	
2000	400	WZ-6282-98-08-000
	500	WZ-6282-98-07-000
	600	WZ-6282-98-06-000
	800	WZ-6282-98-05-000
2200	400	WZ-6282-98-04-000
	500	WZ-6282-98-03-000
	600	WZ-6282-98-02-000
	800	WZ-6282-98-01-000

Package: 1 pc.

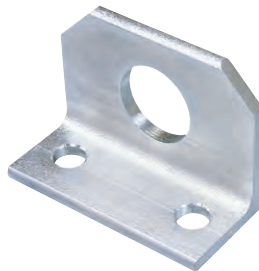


ACCESSORIES FOR SZE3 CABINETS

LIFTING ACCESSORIES



Eyebolt



Lifting angle

Lifting accessories

Fixed to threaded holes in the top corners of the cabinet's frame.

Offered in two options:

- 1) eyebolts - galvanised steel, eye diameter: 30 mm, thread for fastening: M12;
- 2) lifting angle for cabinets bayed in rows - galvanised steel angle, lifting hole diameter: 38 mm, two holes for mounting screws M12.

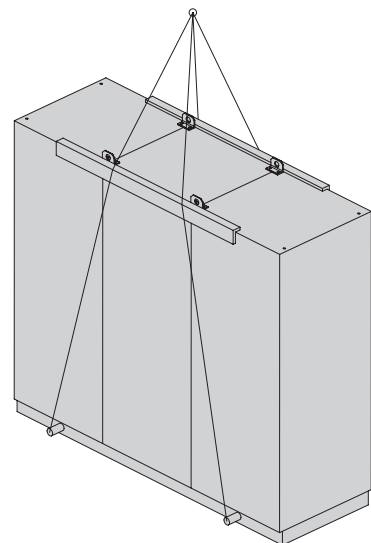
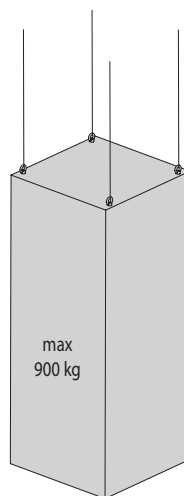
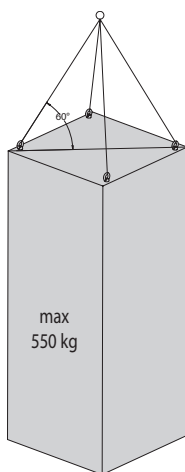
Scope of delivery

Lifting accessories are sold separately.

Lifting angle is supplied with mounting screws.

Product name	Package	Catalogue number
eyebolt	1 pc.	M1F-00-0106
lifting angle	1 pc.	WZ-6282-69-00-C12

TRANSPORT OF SZE3 CABINETS



For larger loads, a set of cabinets should be preferably placed on a single shared welded plinth which reinforces the entire structure during transport. For advice on selection of an appropriate plinth type, please ask ZPAS S.A. design department.